

A 2010 Anaerobe

The 10th Biennial Congress of the
Anaerobe Society of the Americas

Sheraton Society Hill
Philadelphia, PA USA
July 7-10, 2010

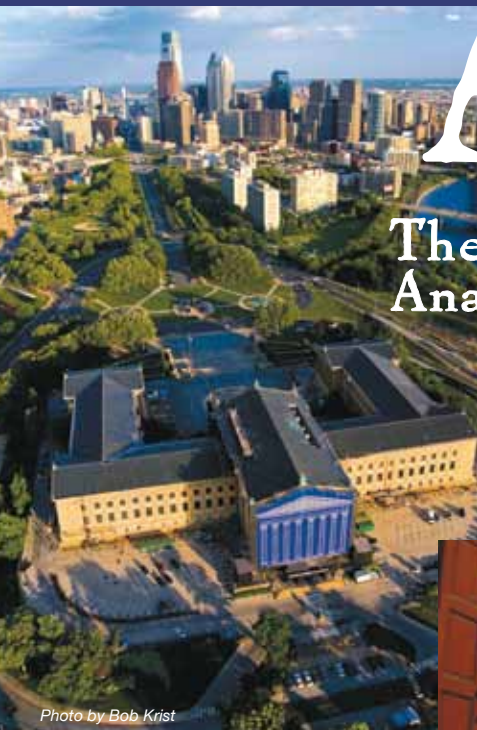


Photo by Bob Krist

Photos courtesy of the Philadelphia
Convention & Visitors Bureau



Photo by Anthony Sinagoga

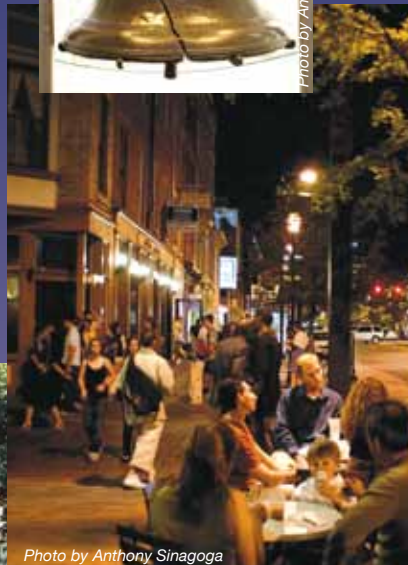
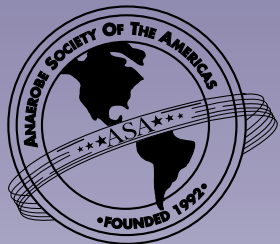


Photo by Anthony Sinagoga



Photo by Edward Savaria, Jr.

SPONSORED BY



LOYOLA
UNIVERSITY
CHICAGO

Stritch School of Medicine

**Microbiology
Educational
Services**

PRE-CONGRESS INFORMATION PACKET

- 2 FACT SHEET
- 3 MAP & PARKING INFORMATION
- 4 CONGRESS PROGRAM
- 6 PRESENTATION GUIDELINES
- 7 TRANSPORTATION INFORMATION
- 7 CONGRESS SOCIAL ACTIVITIES
- 8 WHAT TO DO IN PHILADELPHIA

FOR ADDITIONAL INFORMATION

Anaerobe Society of the Americas • PO Box 452058
Los Angeles, CA 90045-8526

Phone: 310-216-9265 • Fax: 310-216-9274 • E-mail: asa@anaerobe.org • Web site: www.anaerobe.org

I. CONGRESS SITE :

Sheraton Society Hill Hotel
One Dock Street, (2nd and Walnut Streets)
Philadelphia, PA 19106 USA
(215) 238-6000
www.Sheraton.com/SocietyHill

II. AIRPORT SHUTTLE :

Shuttle Bus service from the airport to the Sheraton Hotel is available through *Lady Liberty Shuttle*: \$10 each way. Buses pick up every 15 minutes. **Taxi** service is a flat \$28.50, plus \$1 for each additional person.

III. CONGRESS SCHEDULE :

See Schedule on Page 4-5

Registration:

In Ballroom Foyer
Wednesday, July 7, 0800–1700
Thursday-Friday, July 8-9, opens at 0700
Saturday, July 10, opens 0730

To avoid long lines on Thursday morning, we encourage you to register on Wednesday, 0930–1700.

Pre-Congress Workshop:

Workshop will be held July 7, 0900–1700, with an hour break for lunch.

Poster Presentations:

Session I—Thursday, July 8, 0940–1030
Session II—Thurs., July 8, 1450–1550
Session III—Friday, July 9, 0930–1030

Student Presentations:

Thursday, July 8, 1230–1330

ASA Society Meeting:

Thursday, July 8, 1730–1800

Wine & Cheese Reception:

Thursday, July 8, 1800–1900

Congress Banquet:

Friday, July 9 at the Mütter Museum
Buses begin departing at 1800 (see page 7)

IV. EXTRA ACTIVITIES

See Page 7

V. E-MAIL

Computer terminals and printers are available in the hotel lobby to access the internet.

VI. WEATHER

The average temperatures in Philadelphia are high: 86°F/30°C, and low is 70°F/21°C. Rain is always possible. Humidity will be high.

VII. THE SETTING

Anaerobe 2010 takes place in one of America's most historic cities, and the Sheraton Society Hill Hotel is situated in Philadelphia's most historic, tree-lined neighborhood. The hotel is a short walk to many of America's most noted landmarks, other tourist attractions, and a variety of restaurants and retail stores. The hotel also offers an indoor heated swimming pool, complimentary fitness facility, whirlpool, and sauna.

VIII. DRESS

The appropriate dress will be casual for all meetings and events. Dress light for warm weather; an umbrella is handy.

Tropical shirts encouraged.

IX. CURRENCY EXCHANGE & ATM

American Express Travel Services Office
16th & JFK, 215-587-2300

Citizen's Bank

1234 Market St., 215-561-5800
20th & Market, 215-671-1000

Travelex Currency Services, Inc.

1800 JFK Blvd., 215-563-7348

The closest ATMs to the Sheraton Hotel are Wachovia Bank, 340 S. 2nd Street and Citizens Bank, 123 Chestnut Street (see map, page 3).

X. PARKING

Parking at the Sheraton Society Hill is \$34 for overnight parking and \$26 per day.

Self parking is also available at 125 S. 2nd St. (one block North). Cost range is \$8.50 for 1 hour to \$18 for 24 hours. Early Bird Special (in by 9am, out by 6pm) is \$9.50

IX. LOCAL TRANSPORTATION

Philadelphia is a very walkable city, especially to sights around the Old City.

Taxis are available at the front of the hotel for longer trips.

To tour the city, there is the **Phlash**. The purple touring-bus-turned-trolley whisks visitors around to major attractions in Center City. For only \$2, the Phlash will take you through a 20-stop Center City loop, running daily from 10 a.m. – 6 p.m. There's no easier way to visit everything in town. There are also several tour companies, including Ride the Ducks, the Big Bus, Philadelphia Trolley Works, and RiverLink Ferry.

Anaerobe 2010

CONGRESS PROGRAM

WEDNESDAY JULY 7, 2010

- 0800-1700 REGISTRATION OPEN
0900-1700 Anaerobe Identification & Susceptibility Workshop
Diane M. Citron, Mike Cox, Kerin L. Tyrrell

THURSDAY JULY 8, 2010

- 0700 REGISTRATION / BREAKFAST / EXHIBITS
0830-0840 Welcome
Bennett Lorber, M.D., President, ASA
- 0840-0940 SESSION I Keynote Address
Clinical Implications of Disturbances in the Human Microbiome
David Relman, M.D.
- 0940-1030 POSTER SESSION I / EXHIBITS
1030-1200 SESSION II Colonic Microbiota: Luminal and Systemic Influence on Disease
Chair: C. Jeffrey Smith, Ph.D.
Probiotic Potential of a Commensal Bacterium in an Animal Model of Colitis
S. Melanie Lee
Microbial Translocation and Disease Progression in HIV and Other Primate Lentiviral Infections
Jason M. Brenchley, Ph.D.
Dominant "Indigenous" Bifidobacteria Isolated from Infant Faeces
Julio Aires, Ph.D.
Characterizing Genomic Diversity of *Fusobacterium nucleatum* from the Human Gut to Explain Differences in Virulence
Jaelyn Strauss
- 1200-1330 LUNCH / EXHIBITS
STUDENT COMPETITION PRESENTATIONS
Chair: Marilyn C. Roberts, Ph.D.
- 1330-1450 SESSION III Vaginal Microbiota: The Complex Anaerobic Environment of Bacterial Vaginosis
Chair: Jeanne Marrasso, M.D.
Use of Molecular Profiling to Describe the Spectrum and Dynamics of Vaginal Microbiota: An Update
David M. Fredricks, M.D.
Easier to Grow than Identify: Characterization of Novel Bacteria from the Female Genital Tract
Sharon L. Hillier, Ph.D.
Interpreting the Epidemiology and Natural History of Bacterial Vaginosis: Are We Still Confused?
Jeanne Marrasso, M.D.
- 1450-1550 POSTER SESSION II / EXHIBITS
1550-1730 SESSION IV Anaerobes in the Oral Cavity
Chair: Thomas E. Rams, D.D.S.
Bacterial Interference and Probiotics in Maintaining Health of the Oral Cavity
Jeffrey D. Hillman, D.M.D., Ph.D.
The Oral Microbial "Canary in the Coal Mine" of Human Disease
Bruce Paster, Ph.D.

Anaerobic Culture of Severe Early Childhood Caries

Anne Tanner, Ph.D.

Rheumatoid Arthritis and Periodontal Disease: A Link by *Porphyromonas gingivalis*?

Arie J. van Winkelhoff, Ph.D.

Smoking Affects Subgingival Bacterial Acquisition and Colonization

Purnima Kumar, D.D.S., Ph.D.

1730-1800 ANAEROBE SOCIETY MEETING

1800-1900 WINE & CHEESE RECEPTION

FRIDAY JULY 9, 2010

- 0700 REGISTRATION / BREAKFAST / EXHIBITS
0800-0930 SESSION V Probiotics: Use and Mechanisms
Chair: Cynthia L. Sears, M.D.
The Use of Probiotics in Diarrheal Disease
Sherwood L. Gorbach, M.D.
Probiotics and Neonatal Necrotizing Enterocolitis
Erika C. Claud, M.D.
Mechanisms of Probiotic Action
James Versalovic, M.D., Ph.D.
Molecular Characterization of ABC-Type Multidrug Efflux Systems in *Bifidobacterium longum*
Valerie R. Abratt, Ph.D.
- 0930-1030 POSTER SESSION III / EXHIBITS
1030-1200 SESSION VI Diagnostic Methods & Microbiology
Chair: Roberta Carey, Ph.D.
Is Sequencing the Solution?
Brandi Limbago, Ph.D.
Identification of Gram-Positive Anaerobic Cocci by Matrix Assisted Laser Desorption and Ionization Time-of-Flight Mass Spectrometry
Alida C.M. Willeboer-Veloo
Tests to Detect *Clostridium difficile*: The Next Generation
Karen Carroll, M.D.
Bacteroides fragilis Fibrinogen Interactions
Sheila Patrick, Ph.D., D.Sc.
Collagen Adhesins and Proteases of South African Clinical Strains of *Bacteroides fragilis*
Bruna Galvao
- 1200-1315 LUNCH / EXHIBITS
1315-1435 SESSION VII *Clostridium difficile*: Pathogenesis
Chair: David Aronoff, M.D.
Variations in TcdB and the Hypervirulence of *Clostridium difficile*—NAP1
Jimmy D. Ballard, Ph.D.
The Gastrointestinal Microbiota and *Clostridium difficile*
Vincent B. Young, M.D. Ph.D.
The Role of the Toxins TcdA and TcdB in *Clostridium difficile* Infection
Sarah A. Kuehne, Ph.D.

Anaerobe 2010

CONGRESS PROGRAM

- The Role of TcdC in the Virulence of *Clostridium difficile* NAP1/027 Epidemic Strains
Glen P. Carter, Ph.D.
- 1435-1450 BREAK
- 1450-1600 SESSION VIII *Clostridium difficile*: Epidemiology
Chair: Dale N. Gerding, M.D.
Controversies in *Clostridium difficile* Infection Epidemiology
L. Clifford McDonald, M.D.
Trends of *Clostridium difficile* Infection in VA Hospitals and Proposed System Interventions
Stephen M. Kralovic, M.D.
Contribution of a Government Target to Controlling *Clostridium difficile* in NHS in England
Brian I. Duerden, M.D.
- 1600-1615 BREAK
- 1615-1730 SESSION IX *Clostridium difficile*: Treatment Options
Chair: Stuart Johnson, M.D.
Narrow Spectrum Therapy of *Clostridium difficile* Infection
Thomas J. Louie, M.D.
"Outside the Box" Management of *Clostridium difficile* Infection: Monoclonal Antibodies, Vaccines, and Non-toxicogenic *C. difficile*
Dale N. Gerding, M.D.
Antibodies to *Clostridium difficile* in Patients during Treatment with Metronidazole, Vancomycin or Tolevamer
Ian R. Poxton, Ph.D.
- 1800 BUSES TO CONGRESS BANQUET AT THE MUTTER MUSEUM
- ## SATURDAY JULY 10, 2010
- 0730 REGISTRATION / BREAKFAST / EXHIBITS
- 0830-0940 SESSION X Veterinary Infections & Anaerobes in the Food Chain
Chair: J. Glen Songer Ph.D.
MLST and MLVA Analysis of *Clostridium difficile* Genotypes from Food Animals, Foods, and Humans
Jane Marsh, Ph.D.
Pathogenesis of Enteric Infections by *Clostridium perfringens* Type A
J. Glenn Songer, Ph.D.
Identification of Novel Pathogenicity Loci Associated with Avian Necrotic Enteritis-producing Strains of *Clostridium perfringens*
Dion Lepp
- 0940-1000 BREAK / EXHIBITS
- 1000-1145 SESSION XI An Update on Cytotoxic Clostridial Pathogens
Chair: Jimmy D. Ballard Ph.D.
Toll-Like Receptors in the Innate Immune Response to *Clostridium sordellii*
Michael J. Aldape, Ph.D.
The Importance of Class A Scavenger Receptors in the Phagocytosis of *Clostridium sordellii*
David Aronoff, M.D.
Genetic Studies of Virulence Factors in Cytotoxic Clostridia
Dena Lyras, Ph.D.
- 1145-1315 LUNCH / EXHIBITS
- 1315-1430 SESSION XII Anaerobes & Biotechnology: Opportunities for Microbiologists
Chair: Mike Cox
Anaerobes: History, Industry, and the Birth of Biotechnology
Mike Cox
Anaerobes: A Piece in the Puzzle for Alternative Biofuels
Paul Lawson, Ph.D.
- 1430-1445 BREAK
- 1445-1600 Session XIII Antibiotics: Resistance & Susceptibility
Chair: David W. Hecht, M.D.
Current Trends in Antimicrobial Resistance among Anaerobes: Results from U.S. National Survey
David R. Snyderman, M.D.
Antimicrobial Resistance in *Clostridium difficile*: The European Perspective
Carl Erik Nord, M.D.
The Lesson Learned from Three Europe-wide Antibiotic Resistance Studies on Bacteroides
Elisabeth Nagy, M.D.
Microbiological Approach to Evaluation of Antibiotics for the Treatment of *Clostridium difficile* Associated Disease (CDAD)
Frederic J. Marsik, Ph.D.
Resistance of *Clostridium difficile* to Cationic Antimicrobial Peptides
Shonna McBride
- 1600-1615 BREAK
- 1615-1745 SESSION XIV Clinical Aspects of Anaerobic Infections
Chair: Ellie J.C. Goldstein, M.D.
Antibiotic Development: Anything New for Anaerobes
Ellie J.C. Goldstein, M.D.
Fusobacterium necrophorum in Pharyngitis
Robert M. Centor, M.D.
Multi-Drug-Resistant *Bacteroides fragilis* Recovered from Blood and Severe Leg Wounds Caused by an IED in Afghanistan
Jeffrey Sherwood, M.D.
The Dutch Approach to Antimicrobial Resistance Containment
John E. Degener, M.D.
Clostridium spp. in Stool Samples of Autistic Children
Gayane Martirosian, Ph.D, M.D.
Antibacterial Activity of Tigecycline in Serum Against Anaerobes Associated with Diabetic Foot Infections
Gary E. Stein, Pharm.D.
- 1745-1800 CLOSING REMARKS

Anaerobe 2010

PRESENTATION GUIDELINES

SESSION PRESENTATIONS

Invited Presentations will be 20 minutes in length, including questions, unless otherwise instructed by the Session Chair.

Oral Presentations, selected from submitted abstracts, are 10 minutes, including time for questions.

Presenters are encouraged to utilize visuals in their presentations. The method of presentation is PowerPoint.

Please e-mail your presentations to asa@anaerobe.org by June 18, 2008 for review.

In addition, bring your presentation to the Congress on a CD or Flash Memory drive.

Please deliver your presentation to the Registration Desk, upon registration.

Though your abstract will be in the Abstract Book, handouts are encouraged.

POSTER PRESENTATIONS

Posters are being divided into four presentation sessions.

Student Presentations: Participants in the Student Competition will prepare a poster and present their work to a panel of judges on Thursday, July 8. Posters should be posted during the morning of Thursday, July 8, and

presentations will take place during the Lunch Break on Thursday. Presentations should be no more than five minutes, and judges will have five minutes for questions. Lunch will be provided for Student Presenters. Posters should be removed at the end of the day.

Poster Session I: Posters should be posted during the morning of Thursday, July 8. Posters Presentations will take place from 0940-1030 on Thursday. Posters need to be removed at the beginning of the Lunch Break.

Poster Session II: Posters should be posted by the end of the Lunch Break on Thursday, July 8. Posters Presentations will take place from 1450-1550 on Thursday. Posters need to be removed by the end of the day.

Poster Session III: Posters should be posted during the morning of Friday, July 9. Posters Presentations will take place from 0930-1030 on Friday. Posters should be removed during the Lunch Break.

Poster Session assignments were specified in your Acceptance Letter. Verify your assignment and location at Registration.

Though your abstract will be in the Abstract book, handouts are encouraged.

MOUNTING POSTER PRESENTATIONS

Poster space is limited to a total of 6 feet (182 cm) horizontal and 4 feet (122 cm) vertical. Please prepare your poster to fit within these specifications.

Posters will be mounted on poster boards provided. Congress will supply push pins and number cards, identifying the posters to the abstract numbers in the Abstract Book.

TRANSPORTATION

Air Travel: Philadelphia International Airport (PHL) is served by 18 airlines, offering non-stop flights from most U.S. cities, as well as from international airports, including Amsterdam, Barcelona, Beijing, Brussels, Dublin, Frankfurt, Glasgow, Lisbon, London, Madrid, Manchester (UK), Montreal, Munich, Oslo, Ottawa, Rio de Janeiro, Rome, Paris, Tel Aviv, Toronto, and Zurich.

AIRPORT SERVICE

Shuttle Bus service from the airport to the Sheraton Hotels is available through *Lady Liberty Shuttle*: \$10 each way. Buses pick up every 15 minutes at the shuttle stop.

Taxi service is a flat \$28.50, plus \$1 for each additional person.

LOCAL TRANSPORTATION

Philadelphia is a very walkable city, especially to sights around the Old City

Taxis are available at the front of the hotel for longer trips. The city also has buses, trolleys, subways, and an all day-pass for unlimited use (plus Zone 1 travel on SEPTA trains) is only \$6. An Anywhere Day Pass is \$10; \$25 for a family.

To tour the city, there is the **Phlash**. The purple touring-bus-turned-trolley whisks visitors around to major attractions in Center City. For only \$2, the Phlash will take you through a 20-stop Center City loop, running daily from 10 a.m. – 6 p.m. There's no easier way to visit everything in town. There are also several tour companies, including Ride the Ducks, the Big Bus, Philadelphia Trolley Works, and RiverLink Ferry.

OPENING RECEPTION—THURSDAY JULY 8

Congress participants and spouses are invited to socialize at the *Wine & Cheese Reception*.

CONGRESS RECEPTION & BANQUET — FRIDAY, JULY 9

The Congress Banquet will be held at The College of Physicians of Philadelphia's Mutter Museum. The College of Physicians of Philadelphia is the oldest professional medical society in the country, and the Mutter Museum features exhibits of anatomy and human medical anomalies. Its collection includes over 20,000 unforgettable objects, including fluid-preserved anatomical and pathological specimens; skeletal and dried specimens, medical instruments, and apparatus; anatomical and pathological models in plaster, wax, papier-mâché, and plastic; memorabilia of famous scientists and physicians; medical illustrations, photographs, prints, and portraits. The current featured exhibit is *Corpreal Manifestation*, an exhibition of eleven ceramic sculptors who examine the human experience from a physiological and psychological perspective.

During the Reception (6:30-7:30pm), hors d'oeuvres and drinks will be served, and attendees may tour the museum. We will then move upstairs to the grand Mitchell Hall for dinner, a talk by the Director of the College, and Congress Awards Ceremony. To be given out are the *Finegold Award for Best Abstract*, the *Young Investigator's Awards*, and *Lifetime Achievement Awards* to Dr. Dale Gerding and Diane Citron.

POST-CONGRESS ACTIVITIES —SATURDAY, JULY 10

For those staying over Saturday night, we will help coordinate several informal options, including dinner at a near by restaurant, visiting the Hispanic Fiesta at Penn's Landing, or even a trip to the Philadelphia Phillies baseball game against the Cincinnati Reds.

Anaerobe 2010 WHAT TO DO IN PHILLY

There are certainly plenty of things to do in Philadelphia, from historical landmarks to art/cultural exhibitions and sporting events. Plan for your visit at the web sites:

www.philadelphiausa.travel
www.phillyvisitor.com
www.philadelphiaweekly.com/
www.philadelphia.tourvideo.com/
www.wheretraveler.com/classic/us/pa/philadelphia/

Upon arrival, visitor information is available at the **Independence Visitor Center**, located at 6th & Market streets—across from the Liberty Bell.

Among the Special Events taking place during our visit are:

Academy of Natural Sciences

Creatures of the Abyss

American Philosophical Society Museum

Dialogues with Darwin

Betsy Ross House

Heavens to Betsy! The Selling of an American Icon

Chemical Heritage Foundation Museum

Marvels and Ciphers: A Look Inside the Flask

Citizen Bank Park - Major League Baseball

July 5-7 Philadelphia Phillies vs. Atlanta Braves

July 8-11 Philadelphia Phillies vs. Cincinnati Reds

Eastern State Penitentiary

Bastille Day Festival

Daytime Historic Site Tours

Franklin Institute

Cleopatra: The Search for the Last Queen of Egypt

Galleries at Moore

Secret Games: Wendy Ewald Collaborations

Independence Seaport Museum

It Sprang from the River! Everyday Objects

Institute of Contemporary Art

Video Art: Replay

Queer Voice

Morris Arboretum of the University of Pennsylvania

Out-on-a-Limb Tree Adventure

Garden Railway

National Constitution Center

Ancient Rome & America

Independence Day Celebration

The Story of We the People

Penn Landing

Movies Under the Stars (July 2, *Mama Mia*;

July 9, *Dream Girls*)

Fireworks (July 4)

30th Annual Hispanic Fiesta (July 10-11)

Pennsylvania Academy of the Fine Arts

Andy Warhol Polaroids and Black & White Prints

The Vogel Collection: 50 Works for 50 States

Roxana Pérez-Méndez: Este Es Mi Pais

Pennsylvania Hospital

From Pastels to PDA's: Medical Education from the

18th Century to the 21st Century

Philadelphia Museum of Art

Late Renoir

Ceramic Interactions

Inspiring Fashions

Kantha: The Embroidered Quilts of Bengal

Visions of Venice

WaterWork

The Philadelphia Zoo

Creatures of Habitat: A Gazillion-Piece Animal

Adventure

Shofuso Japanese House and Garden

Japanese Tea Ceremony Classes

University of the Sciences in Philadelphia Museum

Secundum Artem

Wood Turning Center

Magic Realism: Material Illusion

Information on these and other attractions will be available in literature available at the hotel.

SHOW US YOUR ROOM KEY OR BADGE

Philadelphia offers all Congress attendees the *Show Us Your Room Key or Badge Delegate Discount Pass*. A wide range of restaurants, tourist attractions, and stores are giving discounts to Congress delegates, by simply presenting your name badge. A list of participating locations will be available at registration.

RESTAURANTS

Though the Congress will provide a Continental Breakfast each morning and the optional Banquet on Friday night, you will be on your own for all your other meals. And you will have plenty of eating alternatives. Philadelphia's Old City features more than 100 restaurants, within walking distance from the hotel. Options vary from fast food to fine dining; from Philly cheesesteak sandwiches to new fusion creations by some of the best chefs in Philadelphia. A map of nearby restaurants will be included in our attendee packet.